



Connect the box to internet via a PC

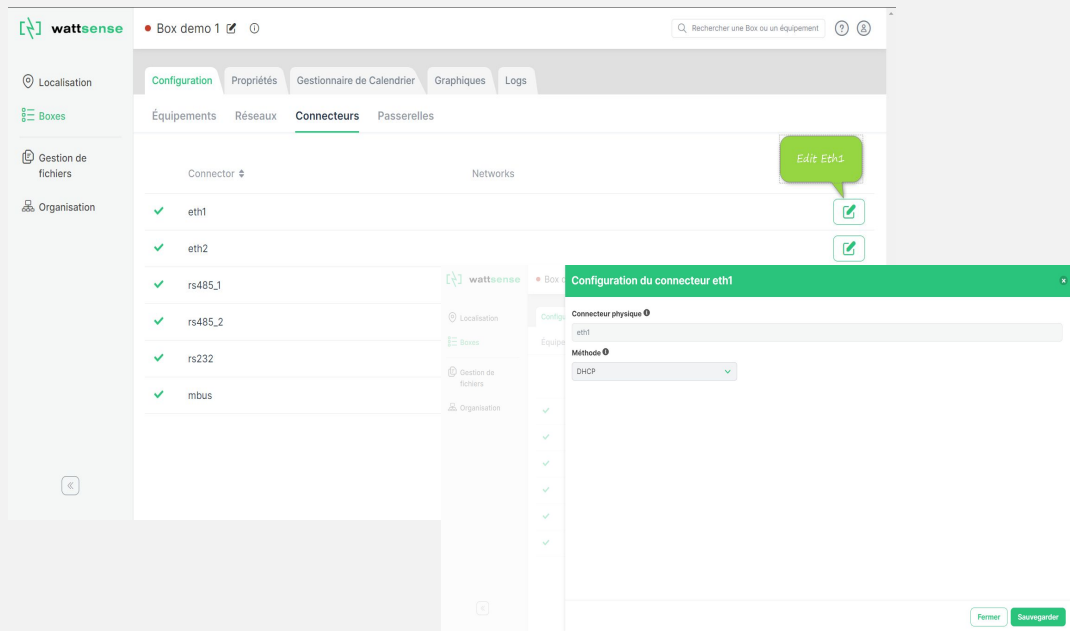
Prerequisite

- Windows PC with windows 10
- Mobile shared connection already on your PC
- Ethernet cable
- Box Wattsense already power on
- Access to your box on console.wattsense.com

Step by Step

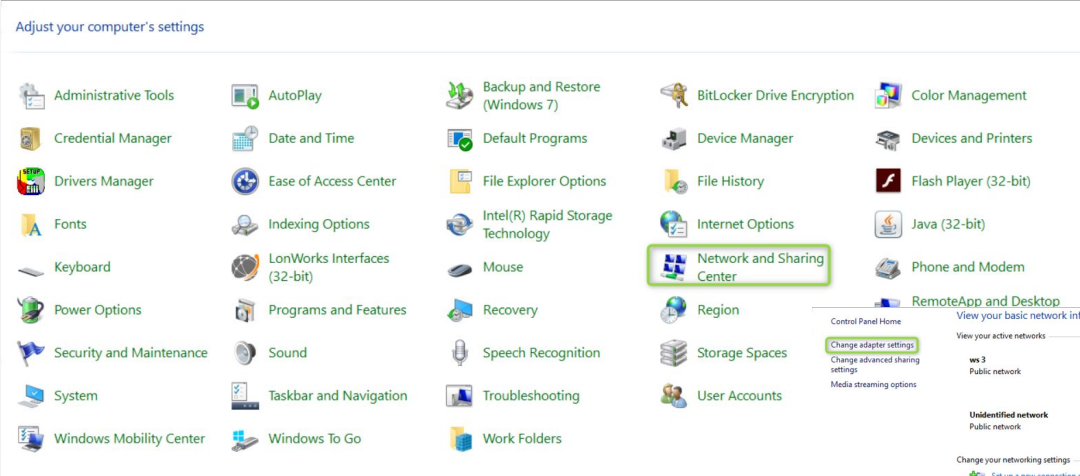


1. Connect the ethernet cable to the box and PC

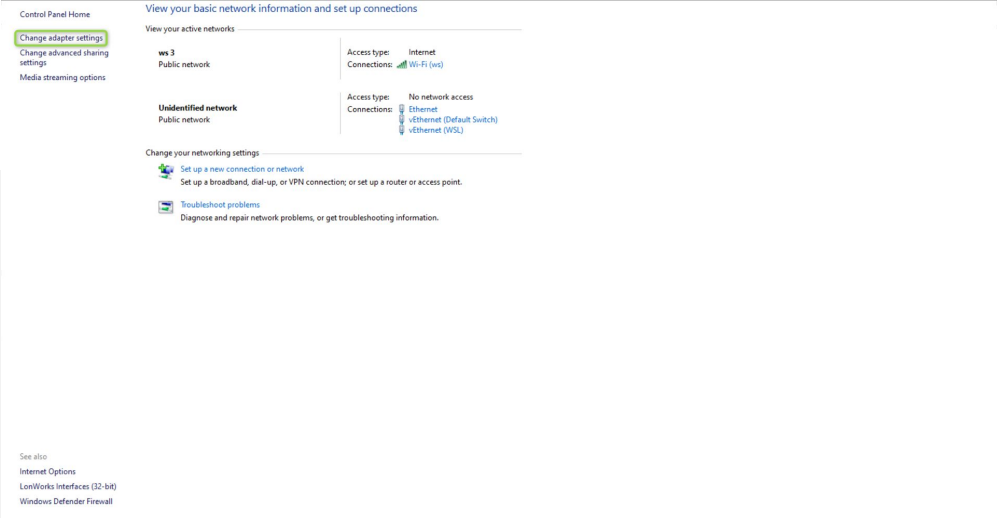


2. Ensure ETH1 and ETH2 are set to DHCP

Control panel



3. Go to **Network and Sharing Center**



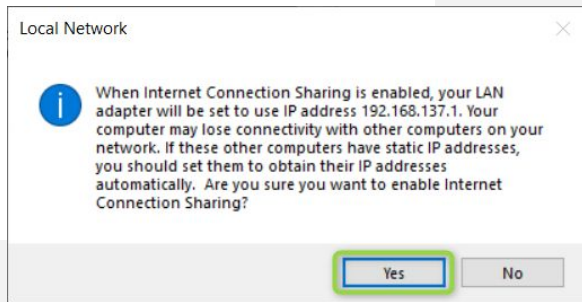
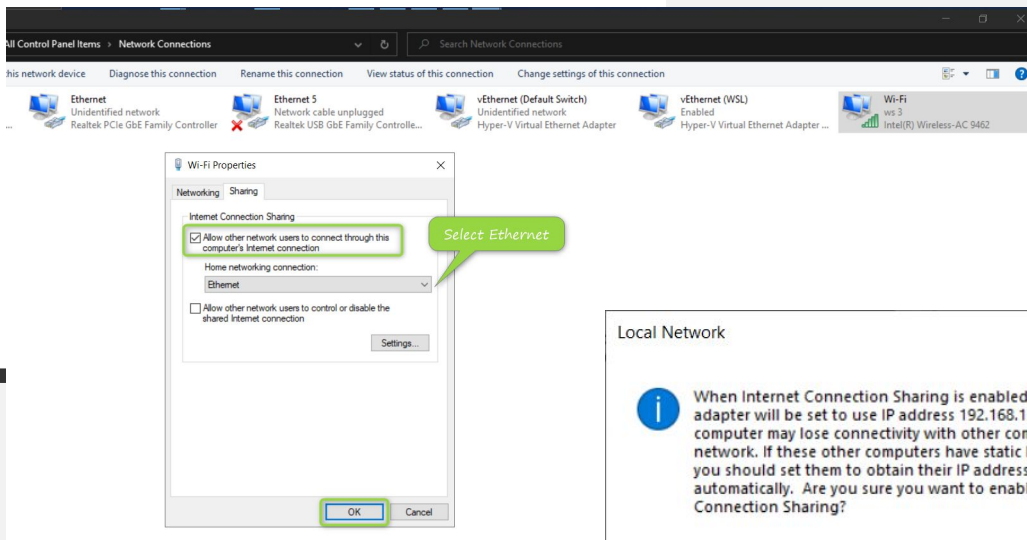
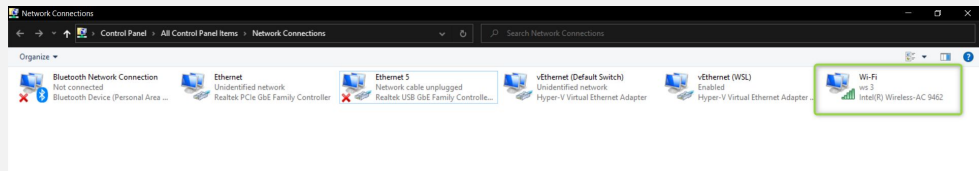
4. Go to **Change Adapter Settings**

Configure your shared connection

5. Right click to your **Wifi adapter**
 - a. Select **Properties**

6. Select **Sharing** tab

7. Accept by clicking **OK**



Box connection

- Check if the connectivity status is green ⇒ Box is **connected** to internet

